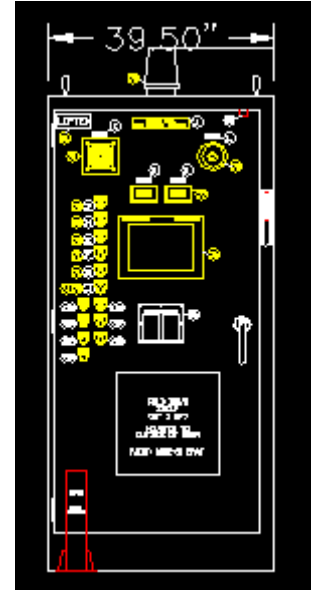
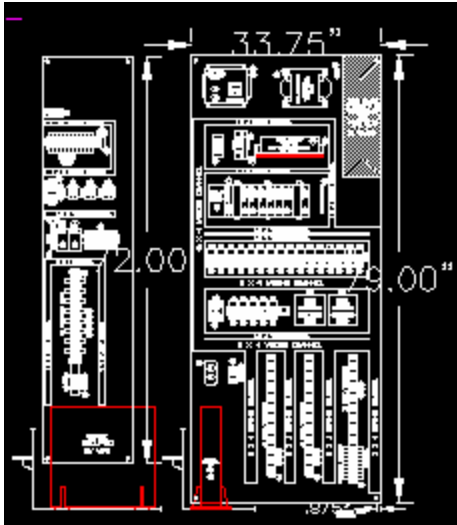


# Process Control Burner Management System



Fenton Systems' Burner Management System (BMS) is based on an Allen-Bradley SLC programmable controller. The system is mounted in a NEMA 12 enclosure and can be powered from either a 120 VAC or 480 VAC source. A 14" color, touch screen, PanelView MMI is mounted on the door of the enclosure. The boiler is operated from this MMI. This enclosure was designed for a dual burner application.

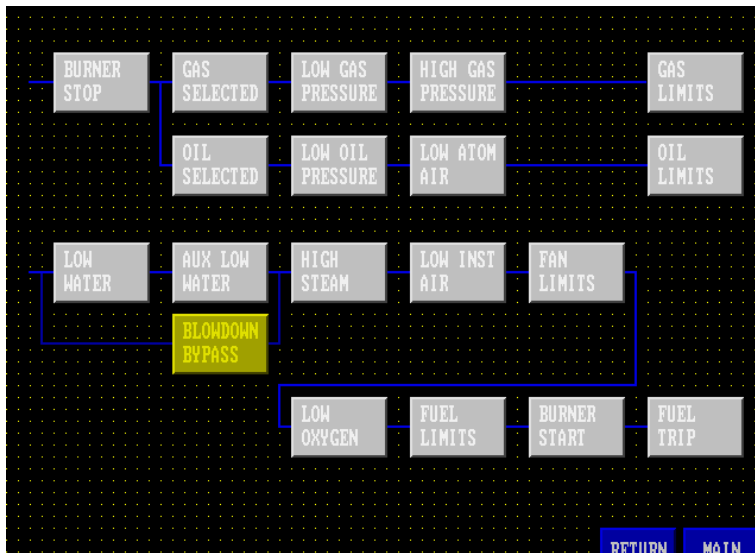


## Burner Management System Feature:

- Burner startup and shutdown sequencing performed by SLC to provide flexibility for diverse applications
- Redundant shutdown circuits provided by SLC and Master Fuel Trip Relay
- External watch dog circuit
- Network interface to Power House Monitoring System



Burner Start Screen



Master Trip Circuit Status Display