

Process Control Power House Plant Master

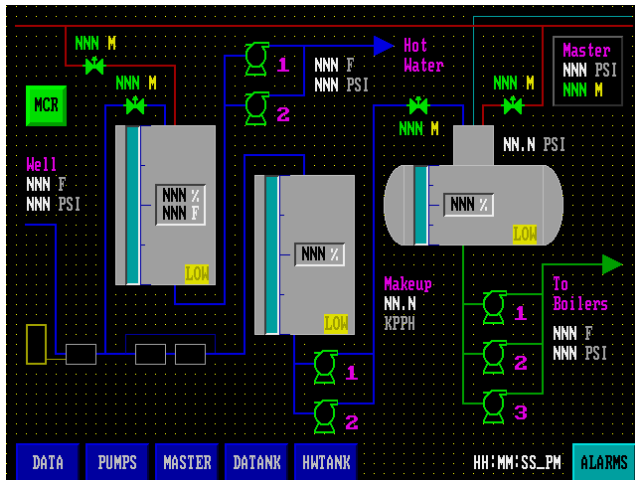
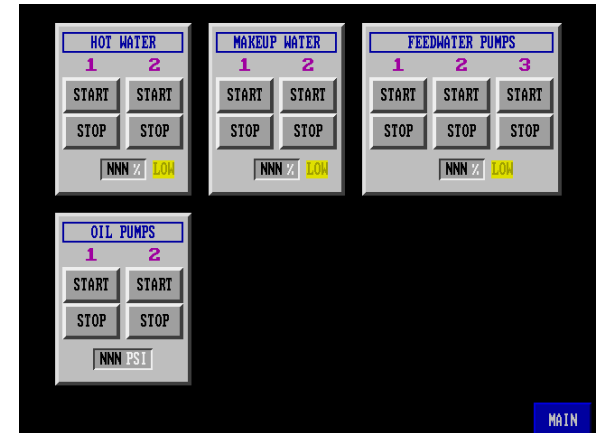


FENTON SYSTEMS INC.

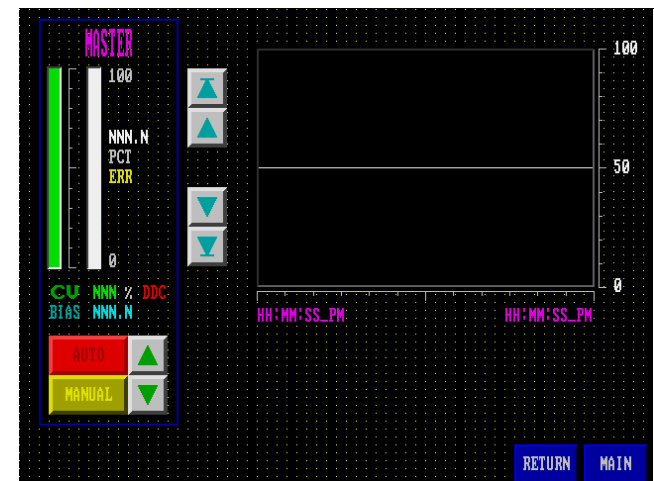
Fenton Systems' Plant Master is based on an Allen-Bradley SLC programmable controller. The control system is mounted in a NEMA 12 enclosure and can be powered from a 120 VAC or 480 VAC source. A 14" PanelView MMI is located on the door of the enclosure.

The Plant Master system provides several functions: Steam Header Pressure Control, DA Tank level and pressure control, condensate tank level control, and pump start/stop control. It can also provide control and monitoring of power house sub-system such as compressors or water processing systems.

Shown are typical screens, which display system status and provide operator access to control loops.



Feed Water System Status



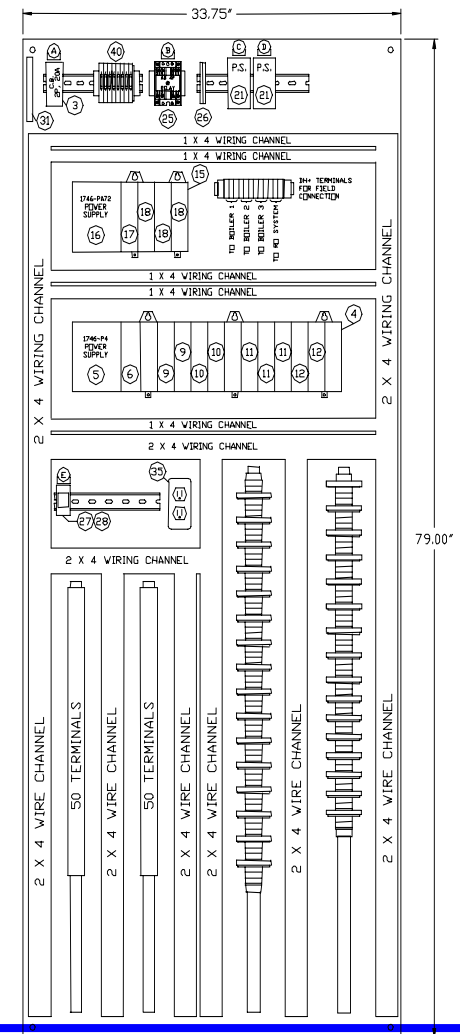
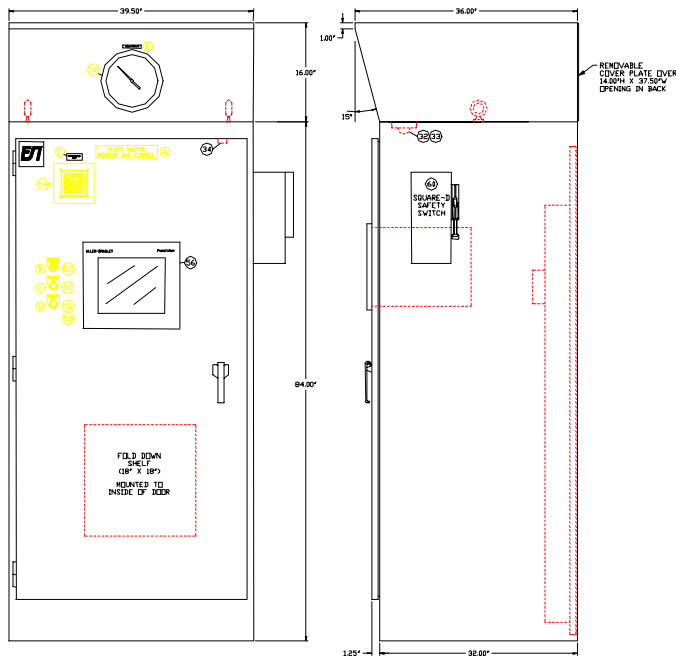
Plant Master Controller

Process Control Power House Plant Master



FENTON SYSTEMS INC.

The Plant Master typical enclosure is shown below. The enclosure can be supplied with or with the “top hat” depending on the need for pressure gauges. All pressure flows and temperatures are displayed on the MMI. An Allen-Bradley SLC provides the Plant Master control functions. Communication to FSI's Power Monitoring System is normally via DH+, but communication option of ethernet can be supplied by the gateway shown on the panel layout.



Fenton Systems, Inc.
Goodrich MI
810-636-6318

FSI-SLCPM